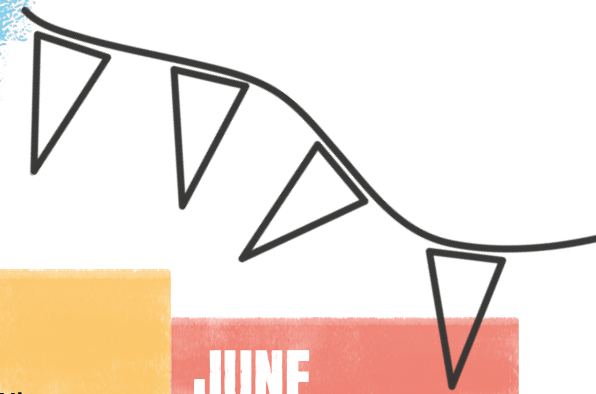


# GET INVOLVED 2025



For more information or events in your local area visit our website [winstonswish.org](http://winstonswish.org)

## JANUARY

### Happy New Year!

Thank you for choosing to support Winston's Wish!

**New year, New challenge?**  
Click here to view all of our events

or take a look at our **A-Z of fundraising ideas here**

**London Winter Walk Ultra Challenge**

**Longleat 10km & 2 Mile fun run**

For more information on how your company can support winston's wish please visit our corporate support pages

**HOST A RE-GIFT SALE**



## FEBRUARY

**Winston's Wish Polar Plunge: Cheltenham**

**Birmingham Running Festival**

**Wear Wellies Day**

**Winston's Wish Firewalk: Birmingham**

3-9: Race Equality Week  
#everyactioncounts

6: Time to Talk Day

3- 9: Children's Mental Health Week

14: St Valentine's Day

Payroll Giving Month

**HOST A VALENTINE'S BAKE SALE**



## MARCH

**Hampton Court Palace Half Marathon**

**Bath 50 Ultra Challenge**

**Beyond Bristol Trails**

**Gloucester Half Marathon & 10km**

2: #WorldTeenMentalWellnessDay

5: Pancake Day

8: International Women's Day

17-23: Neurodiversity Celebration Week

30: Mothering Sunday

30: Winston's Wish Radio 4 appeal launch day, listen in and join us in sharing far and wide!

**HOST A SHOCKING SHIRT DAY**



## APRIL

**London Landmarks Half Marathon**

**Easter 50 Ultra Challenge**

**London Marathon**

**ABP Newport Marathon Festival**

10: Siblings Day

20: Easter Sunday

22: Earth Day

30: Eid al Fitr

Autism Awareness Month

**ORGANISE AN EASTER EGG HUNT**



## MAY

**Isle of Wight Ultra**

**3 Peaks Challenge**

**Jurassic Coast Ultra**

**Hackney Half Marathon**

**London to Brighton Ultra Challenge**

**AJ Bell Great Bristol Run**

5-11: Dying Matters Awareness Week

12-18: Mental Health Awareness Week

15: International Day of Families

29: National Biscuit Day

**ORGANISE A EUROVISION SWEEPSTAKE!**



## JUNE

**Lake District Ultra Challenge**

**Cotswold Way Ultra Challenge**

**Peak District Ultra Challenge**

**Cheltenham Running Festival**

**Blenheim Palace Triathlon**

1-7: June Volunteers Week

9-15: Loneliness Awareness Week

15: Father's Day

Pride Month

**HAVE A SUMMER BBQ**



Need support? get in touch  
Helpline: 08088 020 021 | [winstonswish.org](http://winstonswish.org)

Some of these dates are subject to change. Accurate at time of publication

Find an event near you  
<https://events.winstonswish.org/runs/local-running-events/>